

Online Directory of Digital Certificates Holder



Your one stop source for all your Digital Certificates Needs, from articles to addresses of practically all the companies selling Digital Certificates in eToken from all CA's in India.

- Latest Trends
- Best Practices of Companies
- Special Offers and Pricing
- Updated list of Resellers.
- News & Articles.
- Newsletters
- Training and Events.

and a lot many more on DigitalCertificate.TV.

Visit today for complete peace of mind and satisfaction.

www.DigitalCertificate.tv

USER MANUAL

eToken™
YOUR KEY TO eSECURITY



This User Manual is created by:



Capricorn Infotech India Pvt. Ltd.

B-8, Vikas Deep Building, Plot No -18,
Laxmi Nagar District Centre,
Delhi - 110 092, INDIA.

Phone: + 91-11- 4244 8288 Fax: + 91-11- 2244 9826

eMail: sales@ITDepot.info Web: www.ITDepot.info

Acknowledgement

Dear Customer :

We thank you for purchasing eToken Pro, and I would personally like to welcome you to our growing list of satisfied users.

The default password for eToken Pro is **1234567890** (and we recommend that you change and remember the password of the eToken, there is no way we could reset the password for the eToken)

We would also recommend that before you store any information (password or Digital Certificate), you should initialize your eToken with an administrator password, the details on how you could initialize your eToken along with other popular support answers could be found at:
<http://www.Go4Support.com/home/etoken>

We once again thank you for your support in buying our eToken PRO & we would be more than happy if you register online at:

<http://www.itdepot.info/products/etoken/reseller/register.aspx>

where we would regularly update you about our newest products, offers and applications launched around eToken.


Rajjesh Mittal
CEO

How to install RTE3.65 ?

❶ Open **eToken** folder from the **Retail CD** and double click on **RTE_3.65**

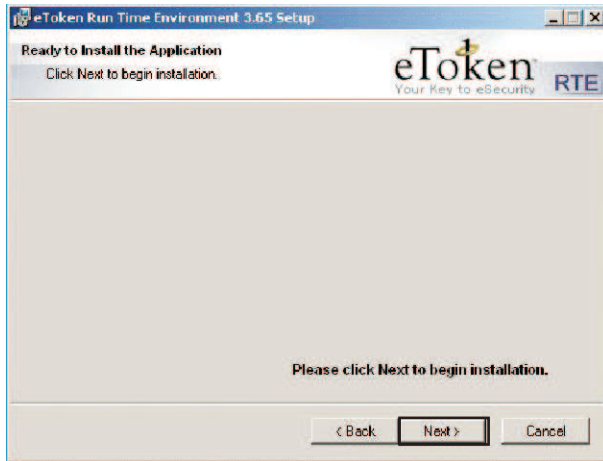
❷ Click **Next**



❸ Select **I accept the license agreement** and click **Next**



4 Click Next



5 Click Finish



6 RTE 3.65 has been successfully installed.

..... END OF PROCESS

What is the default password of eToken?

All eTokens are configured at manufacture with the factory default password.

The password is **1234567890**

To ensure strong, two-factor security, and to enable full user functionality, it is important that the user changes the factory default password to an eToken password of the user's own choice, as soon as the new eToken is received.

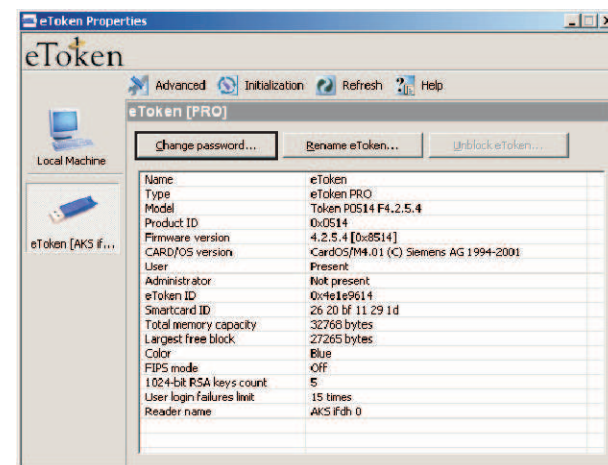
For this reason, the user is forced to change the default password the first time the eToken is used.

How to change the password of eToken?

1 Insert the eToken in the USB port of the computer.

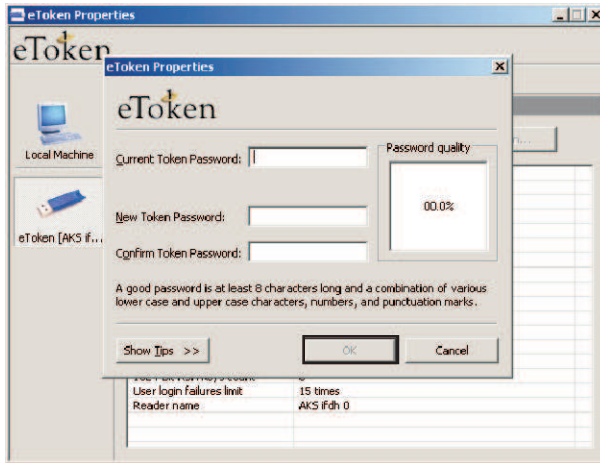
Click **Start > programs> eToken> eToken properties**

Click **Change Password**



■ How to change eToken Password?

- 2 Type **default password, new password and confirm password** . Click **OK**.



- 3 Password has successfully changed.

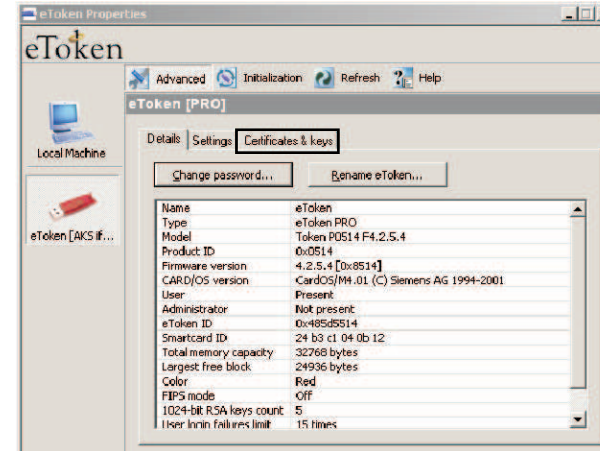
..... END OF PROCESS

■ How to import Digital Certificate in eToken?

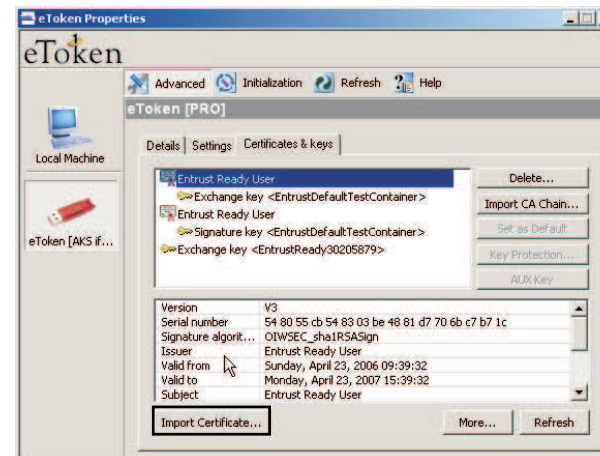
How to import Digital Certificate in eToken?

- 1 Insert the **eToken** in the USB port of the computer.
Click **Start > programs> eToken> eToken properties**
Click on **Advanced**. Type eToken password. Click **OK**.

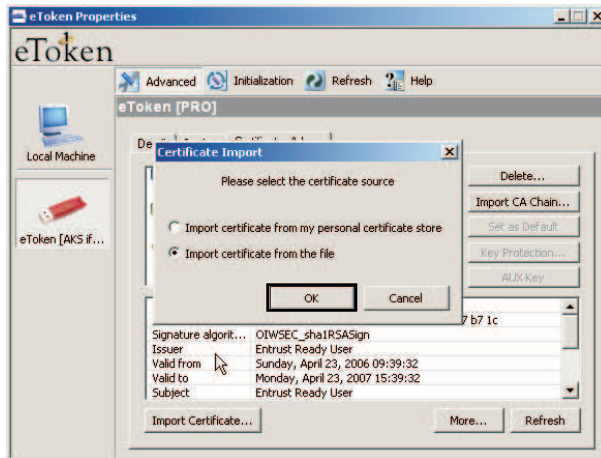
Click on **Certificates & Keys**



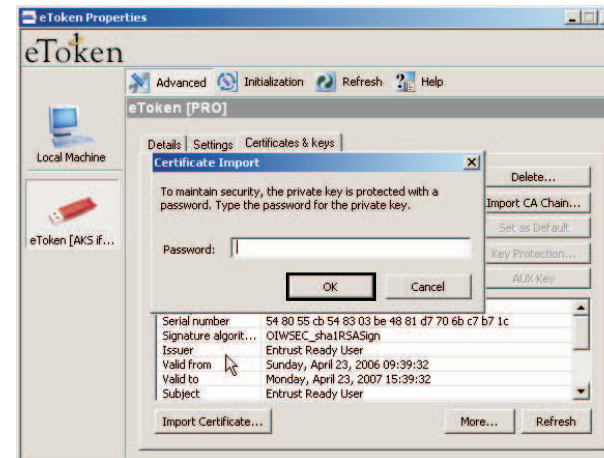
- 2 Click on **Import Certificate**



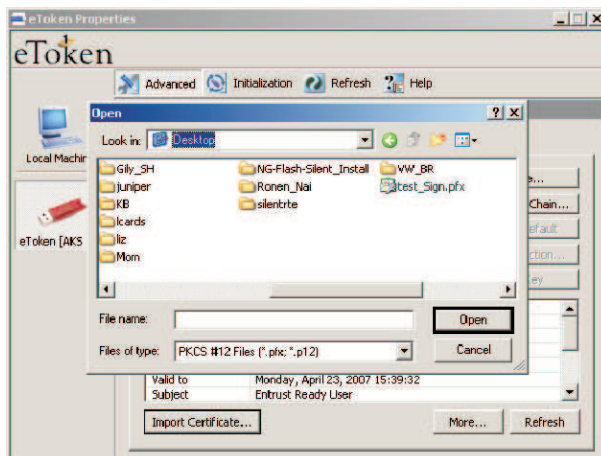
- 3 Select **Import certificate from the file** and click **OK**.



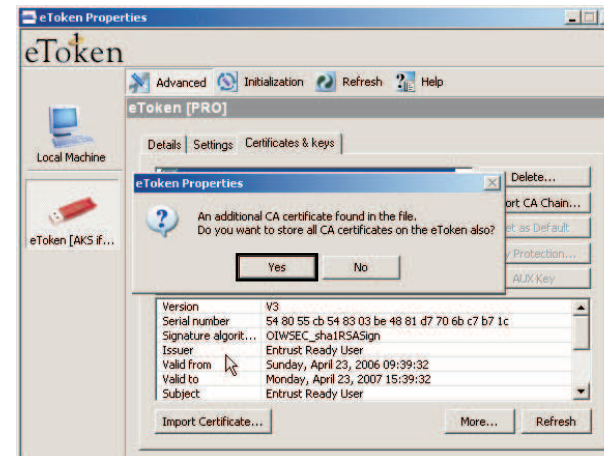
- 5 Type the password. Click **OK**



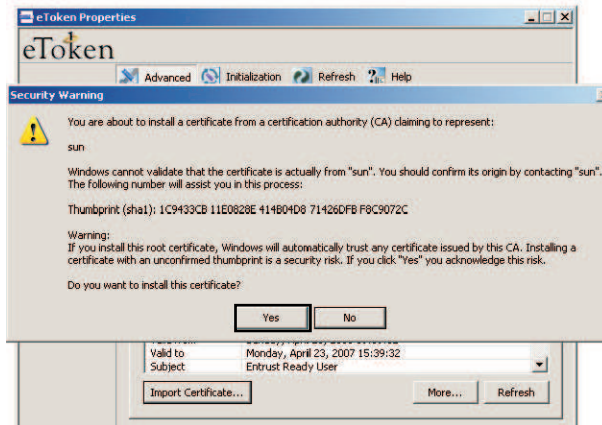
- 4 Select your **certificate file** and click **open**.



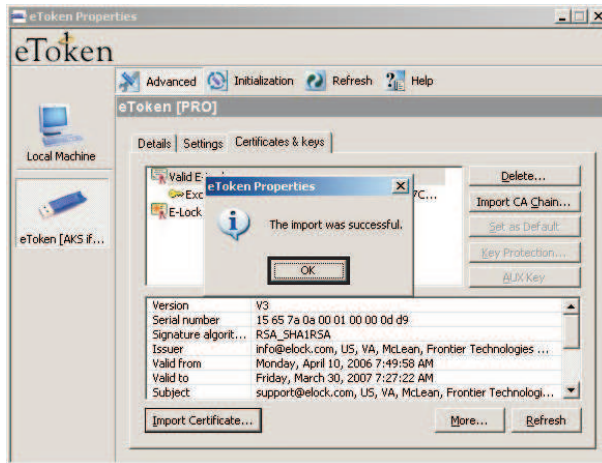
- 6 Click **Yes**



7 A Security Warning will appear, click Yes



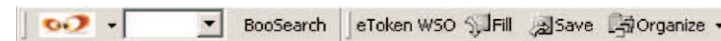
8 Click OK



9 The import was successful.

..... END OF PROCESS

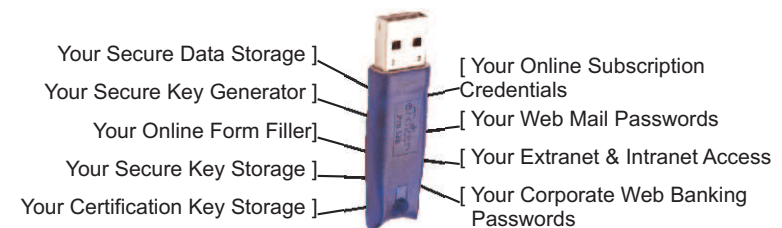
Web Sign On with BooSearch ToolBar



Securely store and manage all web login credentials with a single eToken password. eToken WSO enables easy, convenient and secure storage of all of your users' web logon and access credentials directly from a web page.

It stores all necessary logon information including passwords, PIN numbers, account numbers, credit card details, telephone numbers, URLs, expiration dates and account notes.







eToken WSO gives users instant access to all their Internet web accounts by recognizing the saved page and automatically filling it out upon presentation of their simple eToken password.



Features of Web Sign On

- 100 % Spyware Free
- 100 % Malware Free
- 100 % Adware Free
- No Backdoors
- No Tracking Codes
- No Zombie Codes

Benefits of Web Sign On

-  Enables users to access multiple web accounts using a single eToken
-  Requires no changes to the web application
-  Manages multiple logon IDs and passwords
-  Allows users to take their passwords with them wherever they go
-  Protects the user's sensitive data and personal information
-  Enables a variety of other security services

Web Sign On can be downloaded from our website, using the following address :

http://www.boosearch.com/BooSearch_Tool_bar_with_eToken_Web_Sign_on.aspx

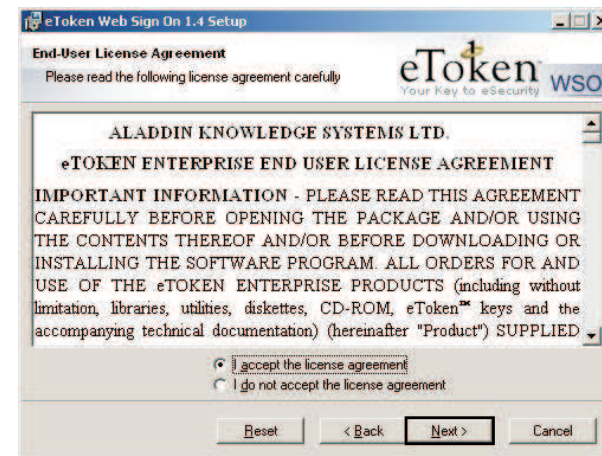
or <http://www.6URL.com/0YE4>

How to install Web Sign On?

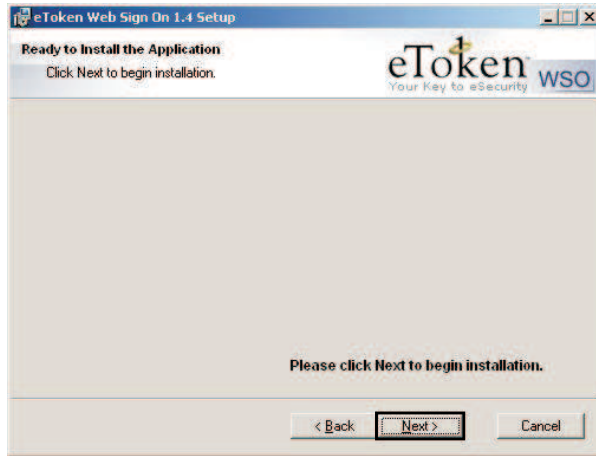
- 1 Open **eToken** folder from the **CD** & double click on **WSO_1_4** Click **Next**



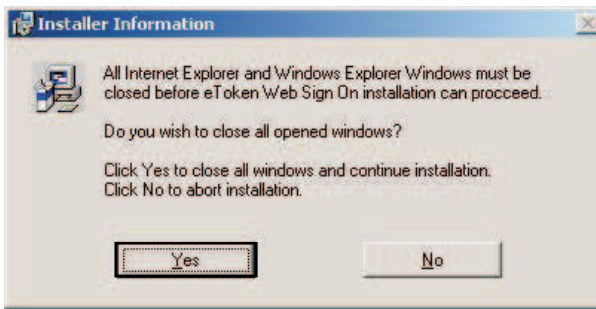
- 2 Select **I accept the license agreement** and click **Next**



3 Click **Next**



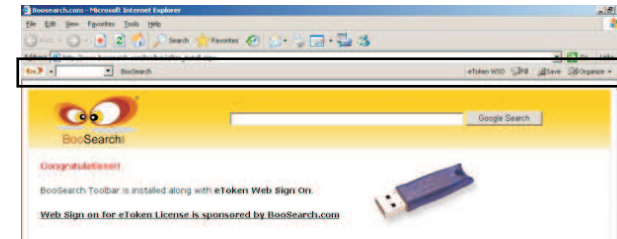
4 Installer Information will appear. Click **Yes**



5 Click **Finish**



6 An internet explorer will open with installed **WSO** in toolbar



..... END OF PROCESS

Saving your personal credentials on your eToken

- 1 Insert your **eToken** into the USB port.
- 2 Browse to a password protected website.
Enter your username and password for the web site.

Click the relevant **submit/login** button.

Username: testuser
 Password: ●●●●●●
 Remember me on this computer.
 Sign in
[I cannot access my account](#)

- 3 The dialog box opens automatically.
Click **Yes**

eToken WSO - Automatic Save
 Would you like to save the login form on this web page on your eToken?
 Yes No
 Don't ask me to save a form again

- 4 The eToken WSO – Save Profile dialog box opens. The profile Name and full URL are displayed. Click **OK** to save the profile (or Advanced to view advanced settings and then **OK**

eToken WSO - Save Profile
 eToken WSO will save this new profile to your profiles list.
 Name: Welcome to 6url.com
 URL: https://www.6url.com /accounts/ServiceLogin?servi
 Don't show this window again
 OK Cancel Advanced >>

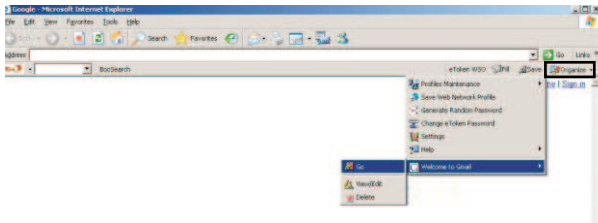
- 5 The eToken WSO – Login to eToken dialog box opens.
Enter your personal eToken password and click **OK**

eToken WSO - Login to eToken
 Enter eToken password to save profile
 eToken: eToken
 eToken password: ●●●●●●●●
 OK Cancel

NOTE: You can store many profiles for different websites on one eToken. You can also store several different profiles for the same website but for different accounts on the same eToken.

Using WSO to log on to a password protected website

- 1 Insert your eToken into the USB port.
- 2 Click **Organize**. Select your web address or type web address directly into address bar of browser



- 3 The eToken WSO – Login to eToken dialog box opens. Enter your personal eToken password and click **OK**



- 4 Your personal credentials are automatically filled in the login screen.

..... END OF PROCESS

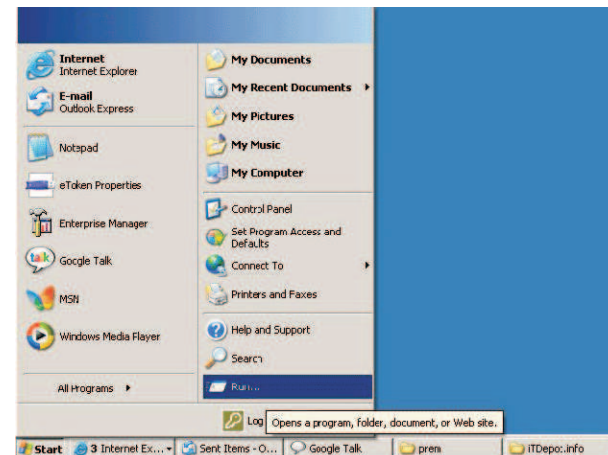
How do I initialize the eToken using RTE ?

The eToken Initialization feature restores an eToken PRO/NG-OTP or Smartcard to its initial state. It also enables the initialization of multiple eTokens and sets the initial eToken configuration, including:

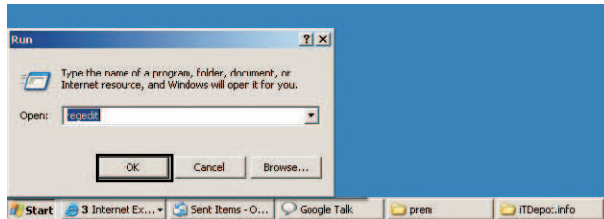
- User password
- Administrator password (optional).
- Retry counters (for user and administrator passwords)
- Initialization key
- FIPS or non-FIPS mode

NOTE: The eToken Initialization feature is designed for use with the eToken PRO, eToken NG-OTP and smartcards.

- 1 Click **Start**. Select **Run**

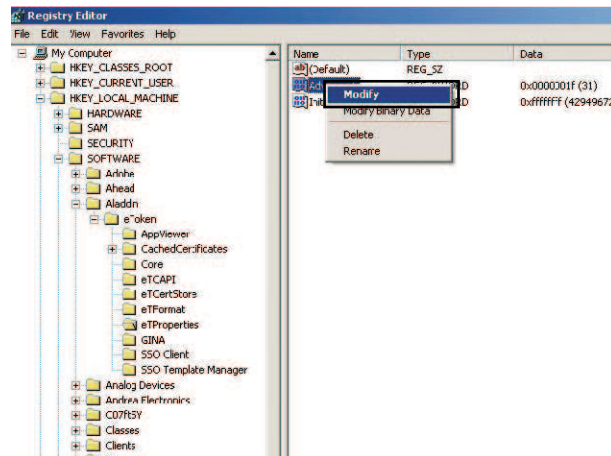


- 2 Type **regedit** into open box and click **OK**

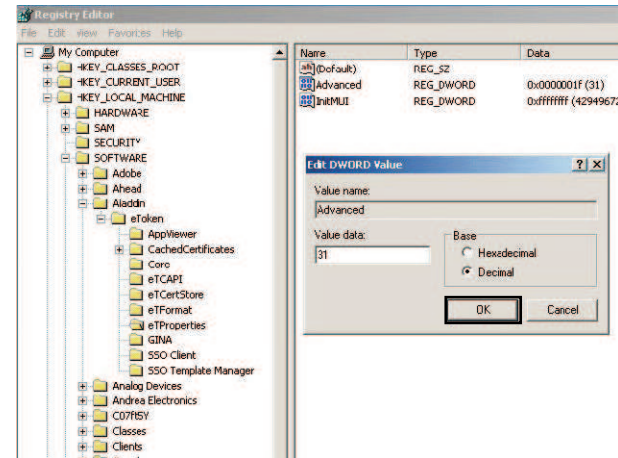


- 3 Navigate to and select the following key:
HKEY_LOCAL_MACHINE\SOFTWARE\Aladdin\eToken
eTProperties

In the right pane, **Right click** on **Advanced** and select **Modify**.

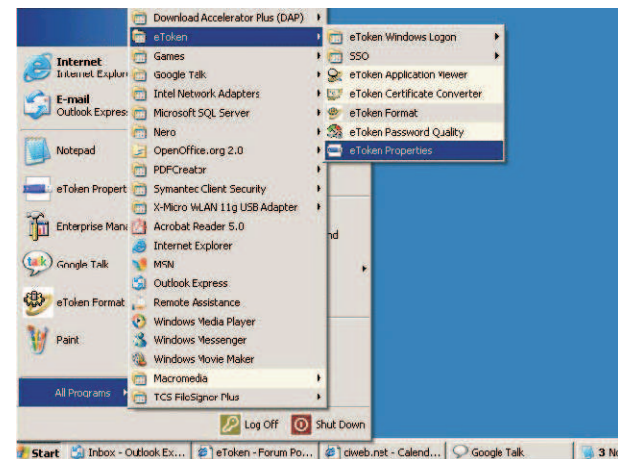


- 4 Select **Decimal** from **Edit DWORD** value dialog box and type **31** into the field & click **OK**

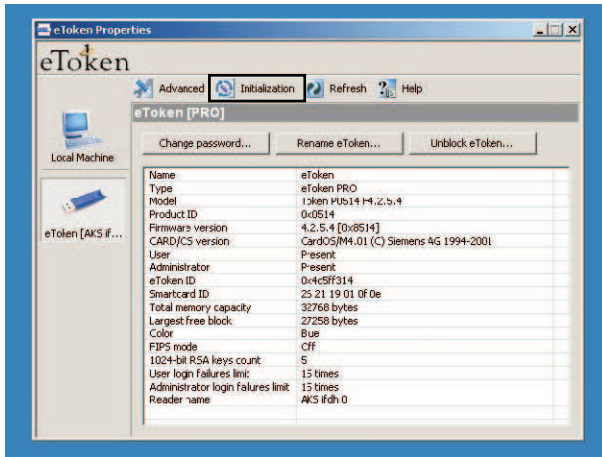


- 5 Close the **Registry Editor**

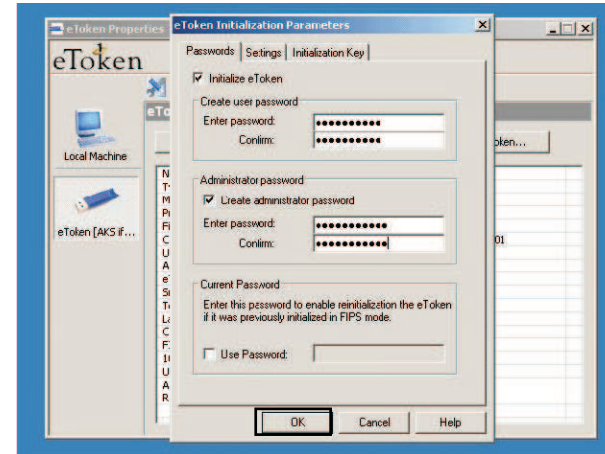
- 6 Insert the **eToken** in the USB port of the computer.
Click **Start > programs> eToken> eToken properties**



7 Click on **Initialization** tab .

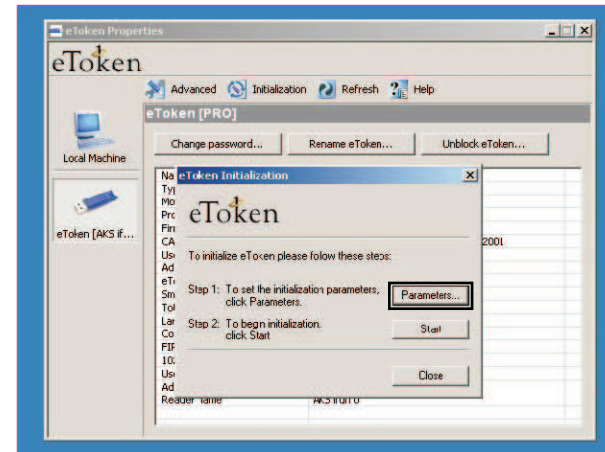
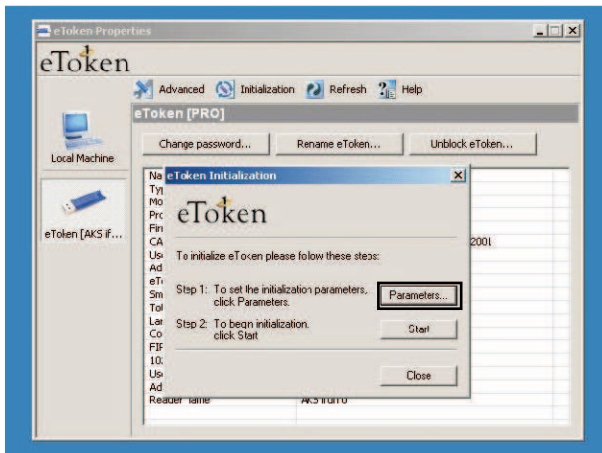


9 Type **user password** and **administrator password** and click **OK**

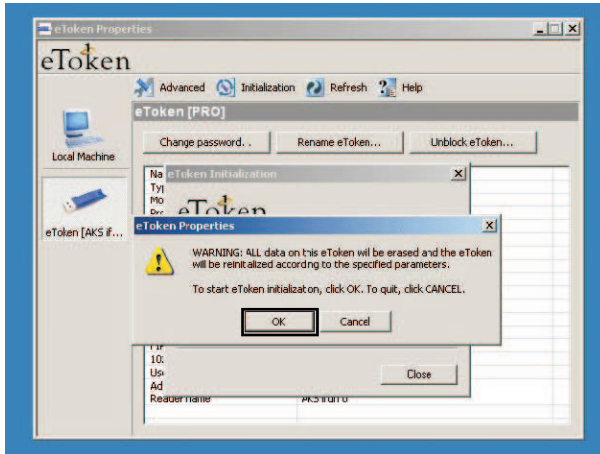


8 Click on **Parameters** from eToken Initialization dialog box.

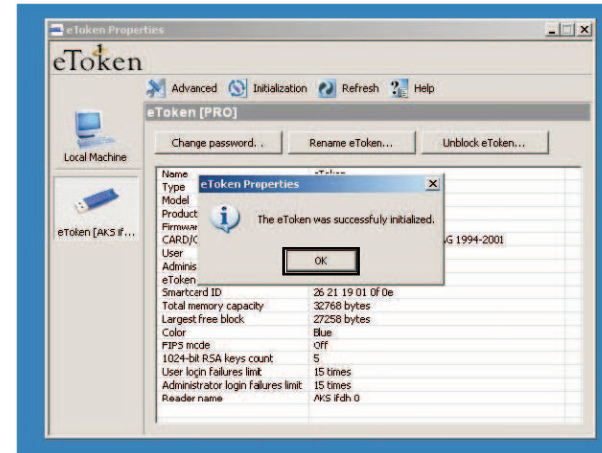
10 Click **Intialization** tab again & click **Start** button.



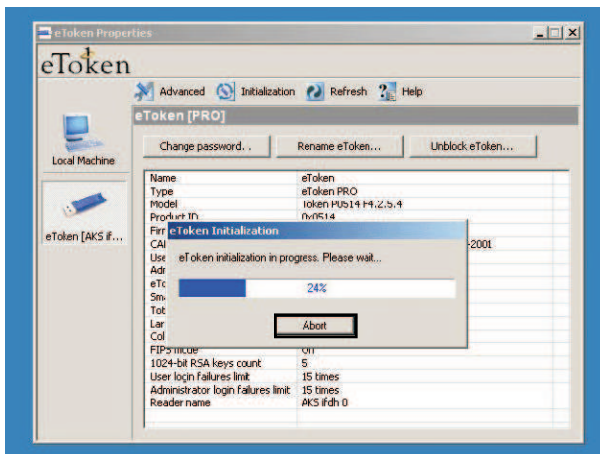
11 A warning will appear, click **OK**



13 Click **OK**



12 Initialization progress will start.



14 The eToken was successfully initialized.

..... END OF PROCESS

How to format eToken?

To format eToken you need to install **eToken utilities 2.0**.

eToken Utilities 2.0 can be downloaded from our website, using the following address :

<http://www.isecurity.info/downloadSoft/downloadfiles/utilities.msi>

or <http://www.6URL.com/0YC3>

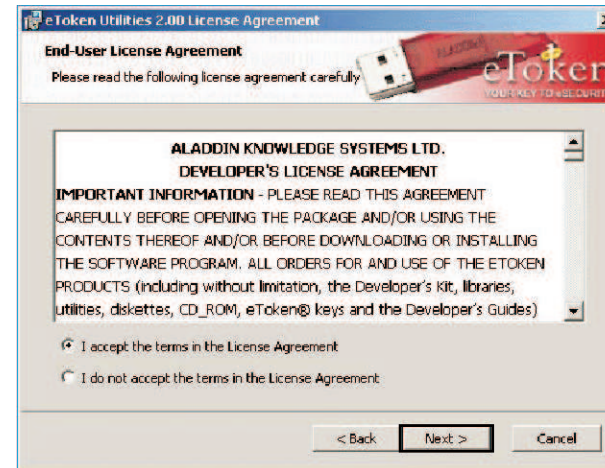
or alternatively you can order for the CD.

NOTE: The format can be done with 32K eToken and not with 64K eToken

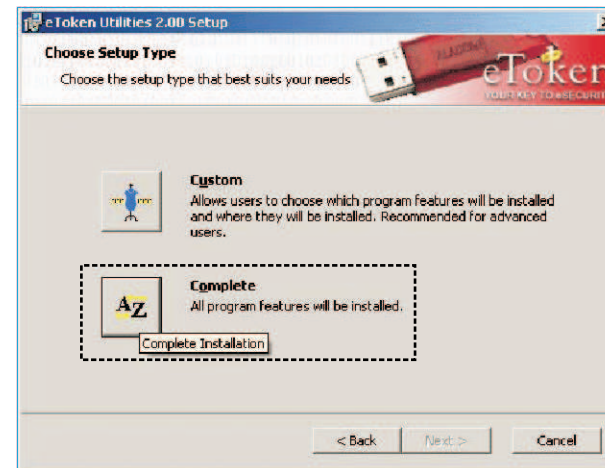
- 1 Open **eToken** folder from the **CD** & double click on **Utilities**. Click **Next**



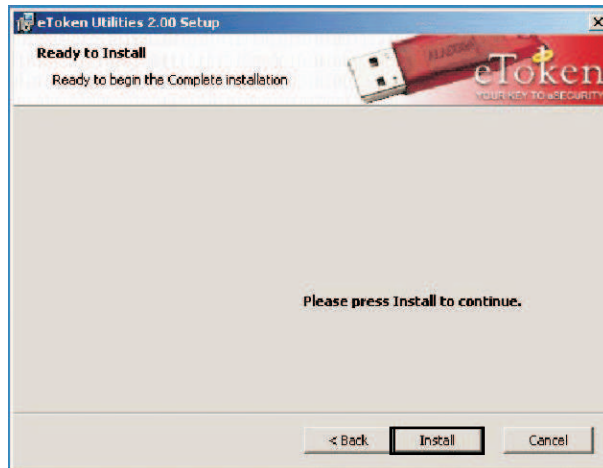
- 2 Select "I accept the license agreement & click **Next**



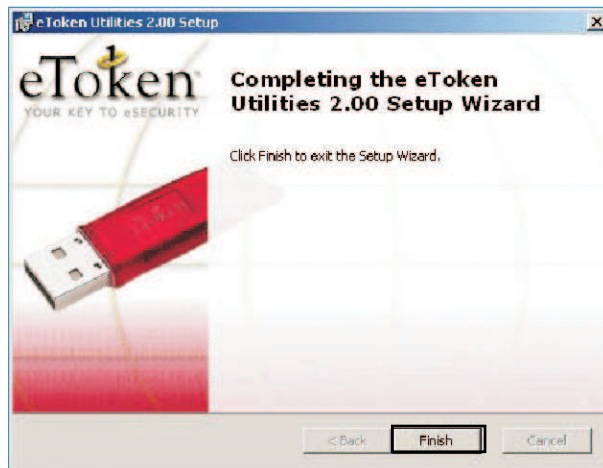
- 3 Choose **Complete**



4 Click Next

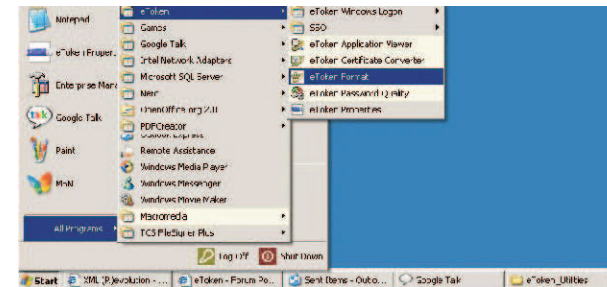


5 eToken utilities has been successfully installed.

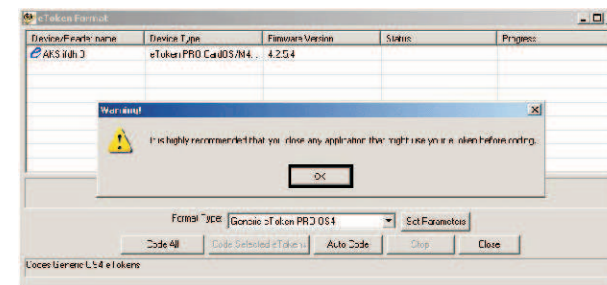


6 Insert the eToken in the USB port of the computer.

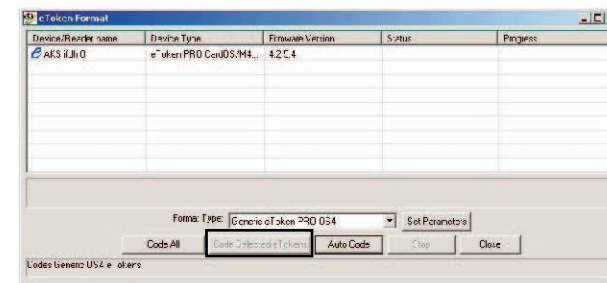
Click **Start > programs> eToken> eToken properties**
Click on **Certificates & Keys**



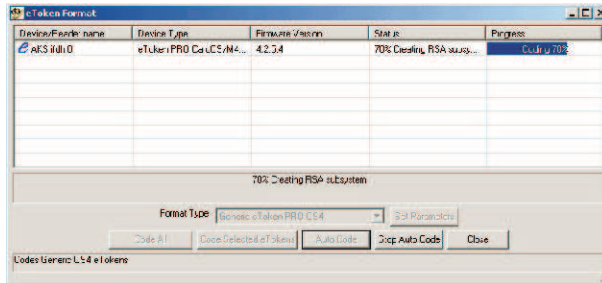
7 A warning will appear, click OK



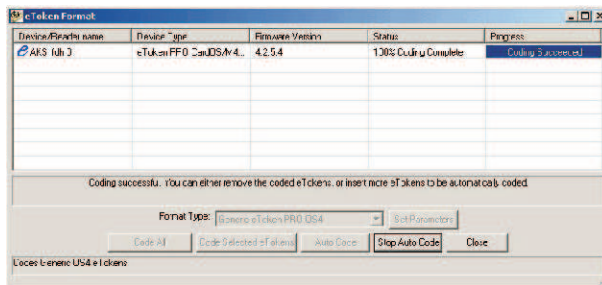
8 Select the eToken which you want to format and Click on **code selected eTokens**.



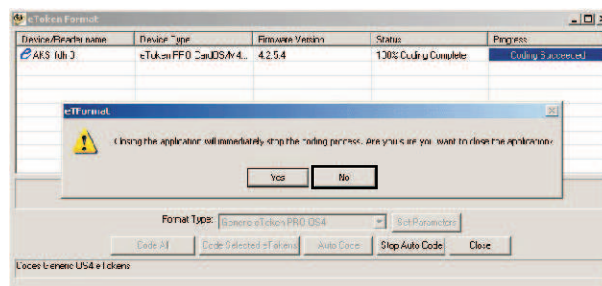
9 The format process will take place.



10 eToken Format is successfully complete.



11 Close the eToken Format and click No



END OF PROCESS

Support



Best Practices to get Faster Support

STEP 1: Check the latest release of softwares & hardwares at Support Homepage (address given below), so that we know you are using the latest releases.

STEP 2: This is a fact that 90% of the problems are not unique, someone, somewhere would have had the same problem before so search our forums (hundreds of questions listed) before you contact the company

STEP 3: If you are one of the few unfortunate ones who has unique problem not listed in our forums then send a mail to Tier-1 support centre.

NOTE: It is always a good practice to go through right levels of support (starting from Tier-1) so that everyone gets involve in helping you.

eToken support can be access on :

<http://www.go4Support.com/home/eToken>